

PRODUCT INFORMATION SHEET

VENT VENTILATION & DRAINAGE BATTEN 20MM

VB20 ROOF

DESCRIPTION

The VENT VB20 is a polypropylene ventilation & drainage batten 20mm designed to facilitate passive airflow in the roof void, reducing the risk of moisture build up and condensation.

FEATURES

- Convenient peel-off adhesive backing reduces the need for nails or screws to hold the VB20 in position
- Insect proof - 4mm vents prevent ingress of nesting insects
- Provides passive airflow of 16,000mm² per linear metre
- Easy to install - manufactured in 1800mm lengths for easy handling
- Strong and durable - designed and tested to exceed minimum roof load requirements of 1.32kN as referenced in AS/NZ1170.0 Appendix B
- Also suitable for use in the wall cavity and cavity closers

BUILDING REGULATIONS, NEW ZEALAND BUILDING CODE (NZBC)

VENT VB20 Ventilation & Drainage Batten 20mm, if designed, used, installed and maintained in accordance with the statements and conditions of this Product Data Sheet, will meet or contribute to meeting the following provisions of the NZBC:

- Clause B1 STRUCTURE: Performance B1.3.1, B1.3.2 and B1.3.4. VENT Ventilation & Drainage Batten 20mm meets the requirements for loads arising from gravity loads, wind and impact [i.e. B1.3.3 (b), (h) and (j)]
- Clause B2 DURABILITY: Performance B2.3.1 (b), 15 years and B2.3.2. VENT Ventilation & Drainage Batten 20mm meets these requirements
- Clause E2 EXTERNAL MOISTURE: Performance E2.3.2. VENT Ventilation & Drainage Batten 20mm contribute to meeting this requirement
- Clause E2 INTERNAL MOISTURE: Functional Requirement E3.2 (c). VENT Ventilation & Drainage batten 20mm contribute to meeting this requirement
- Clause F2 HAZARDOUS BUILDING: Performance F2.3.1. VENT Ventilation & Drainage Batten 20mm meets this requirement

SCOPE OF USE

The VENT Ventilation & Drainage Batten 20mm VB20, has been BRANZ appraised for use as non-structural roof battens and vents for use with pitched and skillion roof construction on buildings within the following scope:

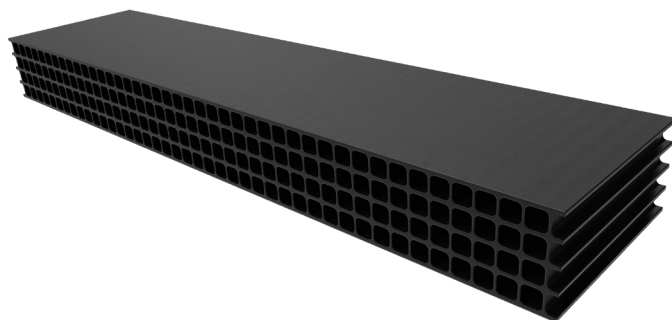
- The scope limitations of NZBC Acceptable Solution E2/AS1, Paragraph 1.1 with regards to building height and floor plan area; and,
- With profiled metal roof cladding; and,
- Situated in NZS 3604 Wind Zones up to, and including, Extra High
- Highly recommended for roofs with cladding profiles with a large area of surface contact with roofing underlays i.e. trapezoidal or deep trough profiles
- Can be used in commercial and residential construction
- To be used as part of a proprietary ventilation system
- Building designers are responsible for incorporation of Roof Ventilation Products into their design for weather tightness and detailing of junctions

APPRAISALS

- BRANZ appraisal No. 979 [2017]

INSTALLATION

1. Peel-off adhesive backing for temporary fixing
2. When applying the VB20 surfaces should be free of moisture and dust
3. Nails or screws can be used to provide additional temporary support to hold the VB20 in place
4. The temporary fixing is designed to hold the VB20 in position for a limited period in unfavourable conditions
5. Can be cut with a knife, cutting tool or hand saw
6. Cladding fixings must be fixed through the VENT VB20 into the purlins. NB: The VB20 should be treated as a non-structural timber cavity batten
7. Roof cladding fixings must conform to manufacturer's specifications
8. The VENT Ventilation & Drainage Batten 20mm should not be exposed to direct sunlight for longer than 30 days



PRODUCT INFORMATION SHEET

VENT VENTILATION & DRAINAGE BATTEN 20MM VB20 ROOF

WARRANTY

- 15 years

MAINTENANCE

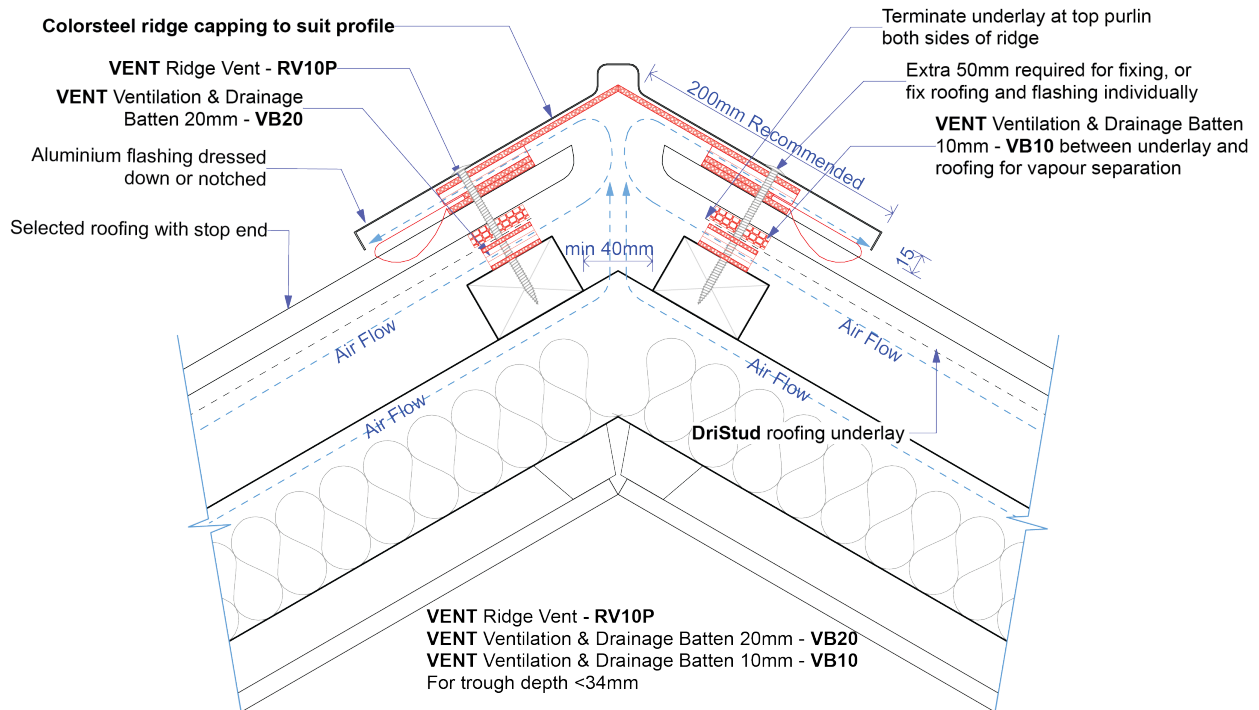
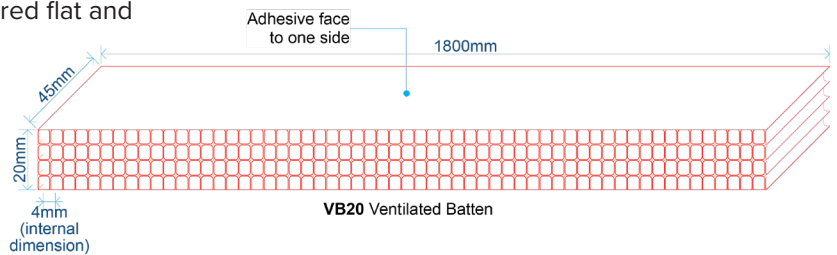
- No maintenance requirements

STORAGE

- Handling and storage of VENT Roof Ventilation Products, whether on-site or off-site, is under the control of the building contractor. Roof Ventilation Products must be protected from direct sunlight and physical damage, and should be stored flat and under cover

SPECIFICATION

Dimensions	1800mm L x 45mm W x 20mm H
Colour	Black
Material	Polypropylene
Box Quantity	50 x 1800mm (90m)



PROFILED STEEL ROOF CLADDING

Ventilated Ridge Detail - Skillion Roof

Main contractor to ensure correct placement of purlins for fixing of Ridge Vent

The Ridge cap is to be supplied by the roof cladding supplier.
200mm ridge cap recommended to hide the soft edge flashing (if required)