

PRODUCT INFORMATION SHEET

VENT VENTILATION & DRAINAGE BATTEN 20MM VB20 WALL

DESCRIPTION

The VENT VB20 is a polypropylene ventilation & drainage batten designed to create a 20mm cavity for ventilation and drainage in the wall cavity, reducing the risk of moisture build up and condensation.

FEATURES

- Convenient peel-off adhesive backing eliminates the need for nails or glue
- Adheres to timber, metal and building wraps
- Insect proof - 4mm vents prevent ingress of nesting insects
- Provides passive airflow of 16,000mm² per linear metre
- Easy to install - manufactured in 1800mm lengths for easy handling
- Ventilated polypropylene structure is strong and robust
- Perfect design for drainage for occasional ingress of water
- Also suitable for use in the roof cavity

SCOPE OF USE

- Commercial and residential application
 - Suitable for use on all roof types
 - Compliant with NZBC Acceptable Solution E2/AS1
- VENT Ventilation & Drainage Wall Battens are suitable for use as non-structural cavity battens for use with non-structural wall cladding systems on timber framed buildings within the following scope:
- The scope limitations of NZBC Acceptable Solution E2/AS1, Paragraph 1.1; and, with a risk score of 0-20, calculated in accordance with NZBC Acceptable Solution E2/AS1, Table 2; and, with cavity-based wall cladding systems complying with NZBC Acceptable Solution E2/AS1 or a valid BRANZ Appraisal that specifies a nominal 20mm (minimum 18mm) drained and vented cavity; and, situated in NZS 3604 Wind Zones up to, and including 'Extra High'.*

(Note: VENT Ventilation & Drainage Wall Battens can also be used on buildings subject to specific weathertightness design. Weathertightness design and detailing of these installations is the responsibility of the designer and is outside the scope of this Appraisal. VENT Ventilation & Drainage Battens are not suitable for use where pressure equalised cavities are required)

Fig A: 3D Render of VB20 Wall and Roof Battens with VENT Passive Ventilation & DriStud Underlay, Wall Wrap and Window Flashing Tape



PRODUCT INFORMATION SHEET

VENT VENTILATION & DRAINAGE BATTEN 20MM

VB20 WALL

SCOPE OF USE CONT.

The VENT VB20 is a polypropylene batten that is the ideal product to create a 20mm cavity for ventilation and drainage in walls for both residential and commercial buildings, as specified by NZBC Acceptable Solution E2/AS1, Paragraph 9.1.8.2. Due to the design of the VENT VB20, it can be installed continuously in horizontal or vertical positions. With no temporary fixings required, the VENT VB20 is both effective and efficient.

When installed horizontally and continuously, VENT Ventilation & Drainage Wall Battens provide vermin proofing to the bottom of the drained cavity. If a durable life of more than 15 years is required, vermin proofing must be installed at the base of the cavity.

When installed vertically or for non-continuous horizontal installations, VENT Ventilation & Drainage Walls Battens do not provide vermin proofing to the bottom of the drained cavity. A cavity vent strip complying with NZBC Acceptable Solution E2/AS1, Paragraph 9.1.8.3 must be installed as part of the selected cladding system.

Where the VENT Ventilation & Drainage Wall Battens are installed vertically or horizontally at greater than 450mm centres and a flexible building underlay is used, a building underlay support in accordance with NZBC Acceptable Solution E2/AS1 Paragraph 9.1.8.5 must be installed over the building underlay behind the cavity battens at 300mm centres horizontally to prevent bulging of the building underlay into the drainage cavity.

When installed vertically or for non-continuous horizontal installations, VENT Ventilation & Drainage Wall Battens do not provide vermin proofing to the bottom of the drained cavity. A cavity strip complying with NZBC Acceptable Solution E2/AS1, Paragraph 9.1.8.3 must be installed as part of the selected cladding system.

Where the VENT Ventilation & Drainage Wall Battens are installed vertically or horizontally at greater than 450mm centres and a flexible building underlay is used, a building underlay support in accordance with NZBC Acceptable Solution E2/AS1 Paragraph 9.1.8.5 must be installed over the building underlay behind the cavity battens at 300mm centres horizontally to prevent bulging of the building underlay into the drainage cavity.

INSTALLATION

1. Peel-off adhesive backing for temporary fixing
2. Must be installed over the building wrap
3. Can be cut with a knife, cutting tool or hand saw
4. Can be installed both vertically and horizontally in line with requirements of selected wall cladding system
5. Cladding fixings must be fixed through the VENT VB20 into studs and dwangs. NB: The VB20 should be treated as non-structural timber cavity batten
6. Cladding fixings must conform to manufacturer's specifications

APPRAISALS

- BRANZ appraisal No. 1099 [2019]

WARRANTY

- 15 years

MAINTENANCE

- No maintenance requirements

STORAGE

- Must be stored on flat surface and protected from the elements
- Protect from physical damage and direct sunlight at all times

PRODUCT INFORMATION SHEET

VENT VENTILATION & DRAINAGE BATTEN 20MM VB20 WALL

Fig B: VENT VB20 Horizontal Cladding System

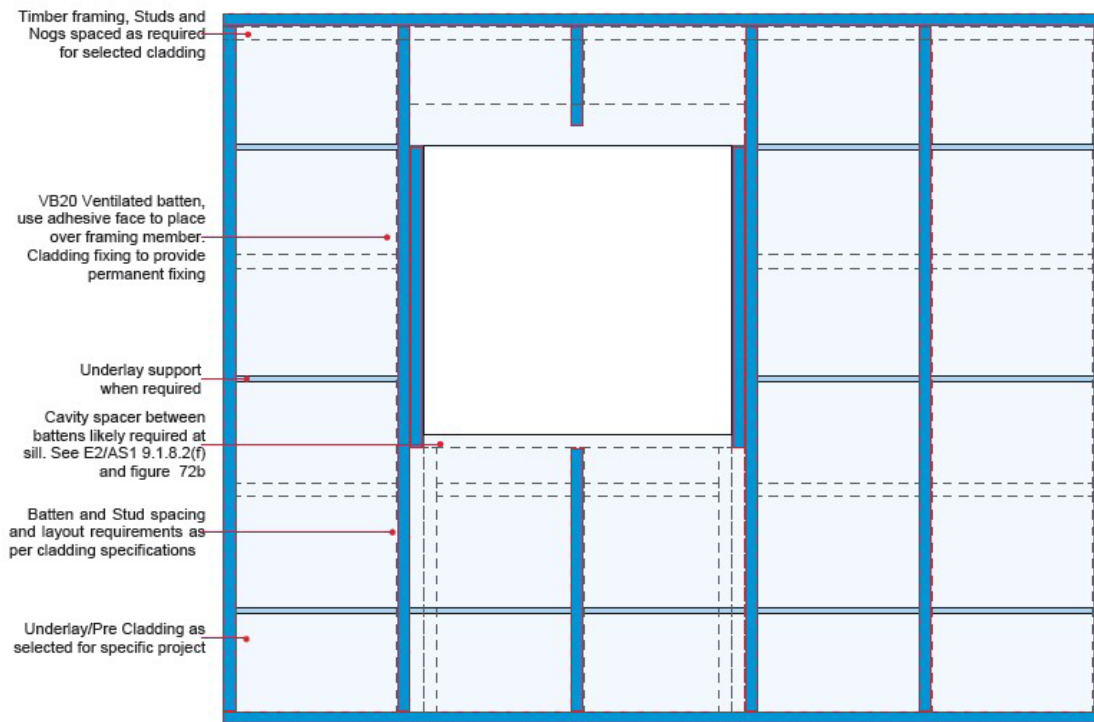
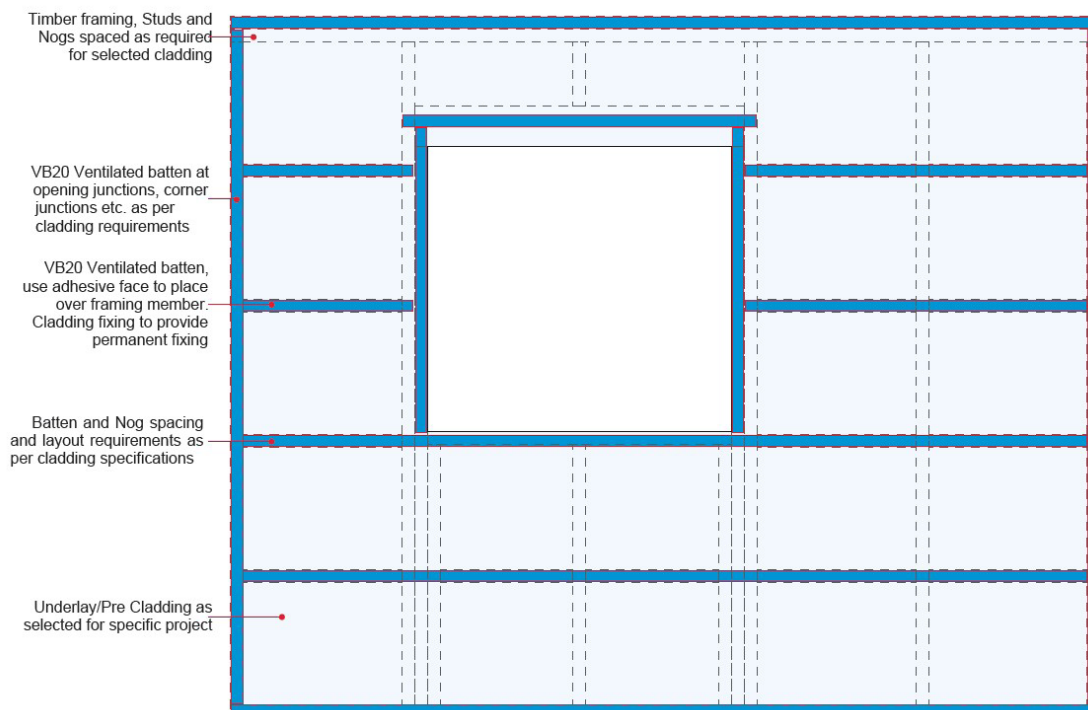


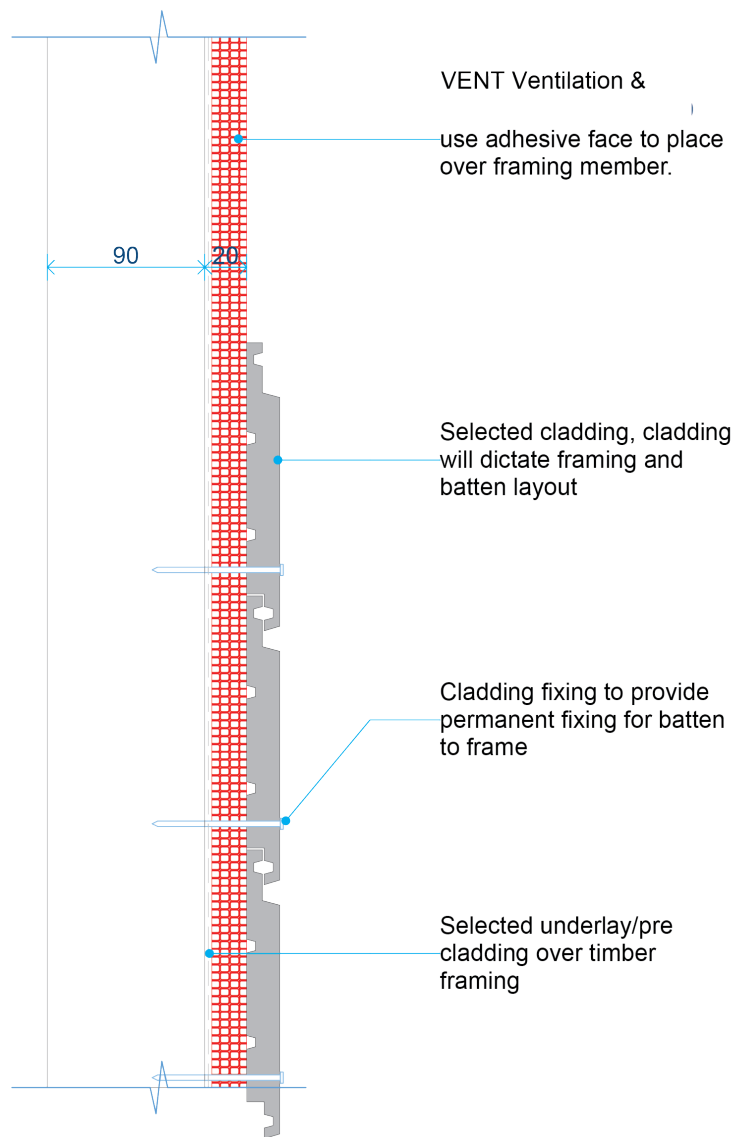
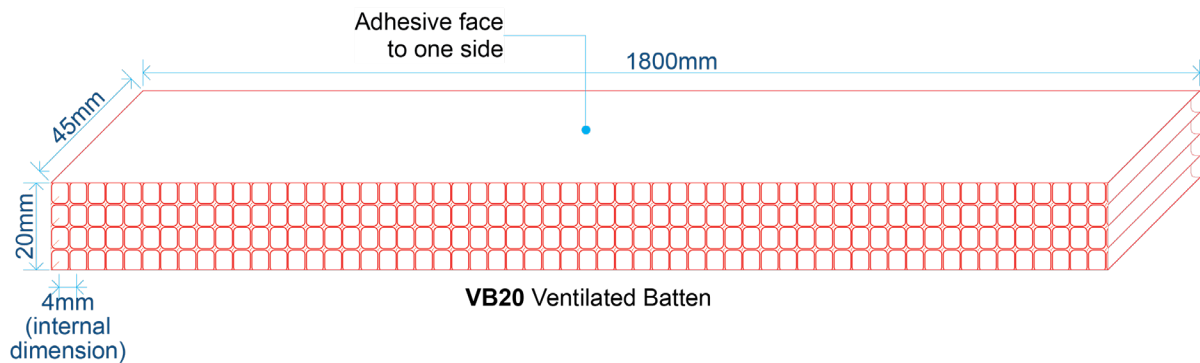
Fig C: VENT VB20 Vertical Cladding System



PRODUCT INFORMATION SHEET

VENT VENTILATION & DRAINAGE BATTEN 20MM VB20 WALL

Fig D: Dimensions



MANAGEMENT OF CONDENSATION IN BUILDINGS | JULY 2021