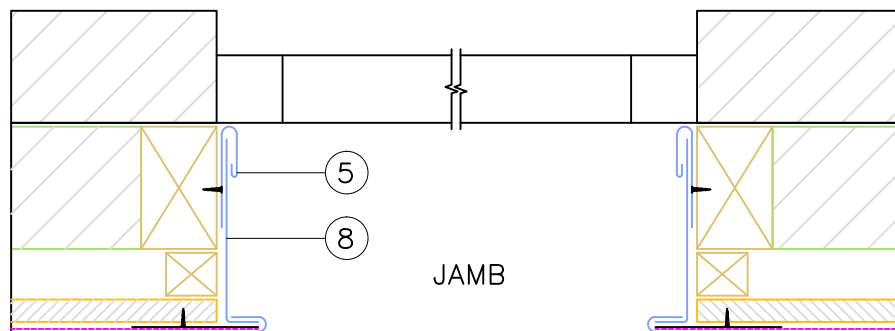


1	Flat Lock Panel
2	Anti - abrasive underlay
3	Plywood substrate 15 mm
4	Perforated cavity closer
5	Pocket or Head Flashing
6	Timber Sill Substrate
7	Sill Flashing
8	Jamb Flashing
<p>Note: Main Structure and Insulation by others</p>	



SCALE 1:6 @A4



P: HEAD OFFICE 09 277 2707
 MANUKAU 09 277 2700
 ALBANY 09 972 0060
 HAMILTON 07 082 0710
 PALMERSTON NORTH 06 323 6037
 WELLINGTON 04 974 5792
 CHRISTCHURCH 03 281 8214

WEB: WWW.theroofingstore.co.nz
 Copyright@TheRoofingStore 2024

TRS FLATLOCK PANEL
 Window Flashings